



07 DAYS / 06 NIGHTS BUDDHIST CULTURAL TOUR

About Sri Lanka: <http://www.worldlanka.com>

DAY 01 AIRPORT – NEGOMBO (15 KM / 25 MINUTES DRIVE)

Arrive at the Bandaranaike International Airport where you will be welcomed by our professional chauffer. After the welcome our chauffer will take you to the hotel in Negombo (about 20 minutes' drive). Evening sightseeing tour in Negombo including Angurukaramulla Temple which is popular for its epic statue of the Buddha, and its dragon-entrance - inside you find detailed murals that date back centuries.

Negombo is popular for its long sandy beaches and centuries old fishing industry.

Overnight Negombo.



Angurukaramulla Temple



Negombo Beach

DAY 02 NEGOMBO – ANURADHAPURA(190 KM /04 HOURS DRIVE)

After breakfast leave for Anuradhapura, World Heritage site, was the center of Theravada Buddhism for many centuries. Sightseeing tour in Anuradhapura to witness the first capital of Sri Lanka dating back to 4th century BC, famous for its well-preserved ruins with magnificent stupas and picturesque lakes which has an irresistible charm for the visitor.

Places to be visited in Anuradhapura: Ruwanveliseya, Abhayagiri, Jetavana, Thuparama, Lovamahapa, Mirisaweti Stupas, , Aukana & Samadhi Buddha Statues, Sri Maha Bodhi (world's oldest authenticated tree), Isurumuniya, Kuttam Pokuna (twin ponds).

Overnight Anuradhapura.



Anuradhapura Ancient Capital

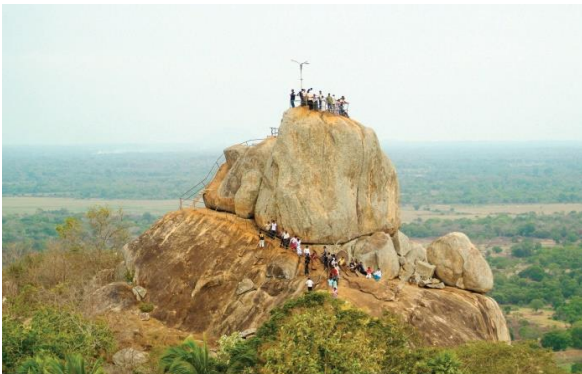
Sri Maha Bodhi Tree

DAY 03 ANURADHAPURA – MIHINTALE – SIGIRIYA (95 KM / 02 HOURS DRIVE)

After breakfast leave for Sigiriya, visiting Mihintale en-route. Mihintale, “the mountain of Mahinda”, “the cradle of Buddhism”, was identified as a great monastic city. It is believed by Sri Lankans to be the site of a meeting between the Buddhist monk Mahinda and King Devanampiyatissa which inaugurated the presence of Buddhism in Sri Lanka.

Proceed to Sigiriya. Visit the rock fortress in the evening. This rock fortress was built by King Kasyapa in the 5th century A.D. and was a royal citadel for more than 18 years. The Sigiriya site contains the ruins of an upper palace located on the flat top of the rock, a mid level terrace that includes the Lion Gate and the mirror wall with its frescoes, the lower palaces clings to the slopes below the rocks. The site was both a palace and a fortress.

Overnight Sigiriya.



Mihintale Rock Temple



Ruins of Mihintale Ancient Hospital

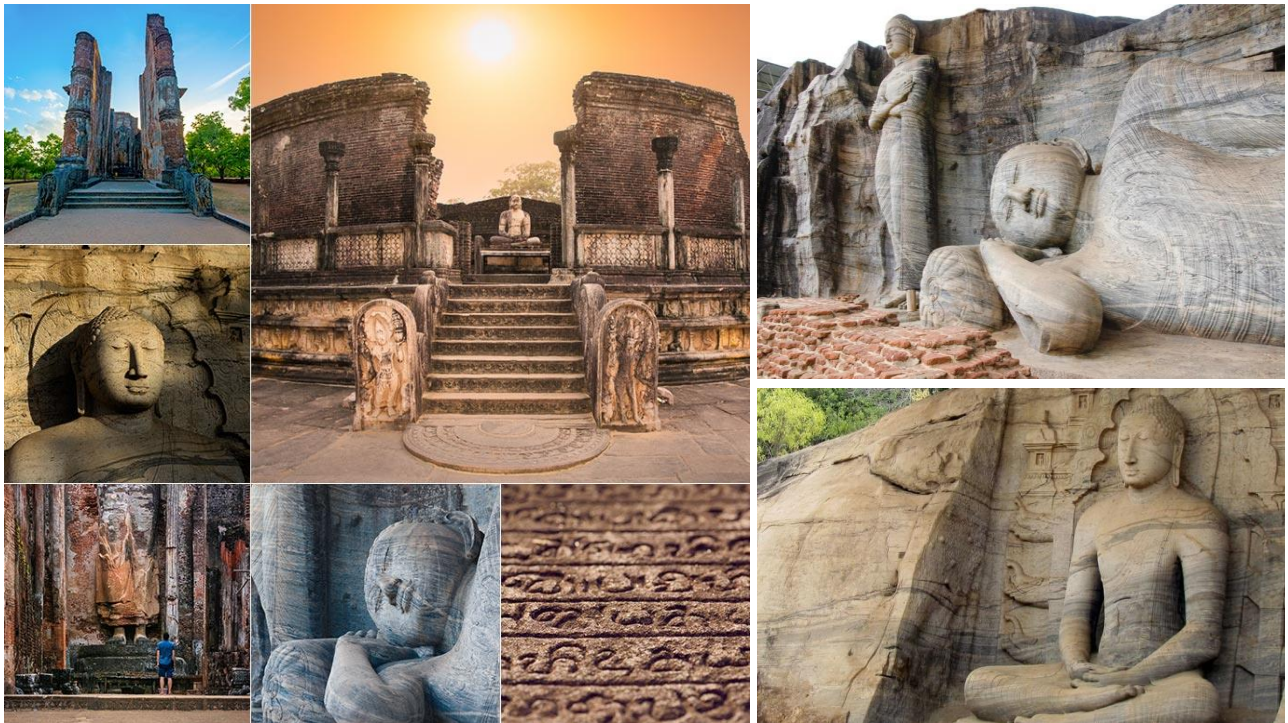
DAY 04 SIGIRIYA – POLONNARUWA – SIGIRIYA (130 KM / 03 HOURS DRIVE)

After breakfast leave for Polonnaruwa, medieval capital of the island (11th & 12th century). Polonnaruwa shows the interesting blend of the influence of the South Indian Hindu culture on the Sinhala Buddhist art & architecture in the scattered shrines & monuments still venerated daily by devotees.

The Siva Devalas are interesting transposition of the Hindu style of décor. Other popular ruins are, the King's Council Chamber the floral stone pillars of Nissanka Lata Mandapaya, the royal citadel, Kumara Pokuna, the Thuparama with its original vaulted roof, the exquisite circular Vatadage relic house, lavished with moonstones, guardstones and sculptured railings, Kiri Vehera, the best preserved of Sri Lanka's un-restored dagobas.

Visit Gal Vihare, the massive statues of Buddha cut in a row form a horizontal escarpment of streaked granite. Visit Demala Maha Seya a shrine of novel design, Thivanka Image House which is famous for Buddhist frescoes, Lankathilake Viharaya, shows a unique style of brickwork architecture. Visit Parakrama Samudraya made by King Parakramabahu, one of the largest man made inland lakes in the world. Can be visited the statue of Parakramabahu near the lake. It's a large statue cut in a niche carved out of rock.

Overnight Sigiriya.



Medieval Capital of Polonnaruwa

DAY 05 SIGIRIYA – DAMBULLA – MATALE – KANDY (120 KM / 03 HOURS DRIVE)

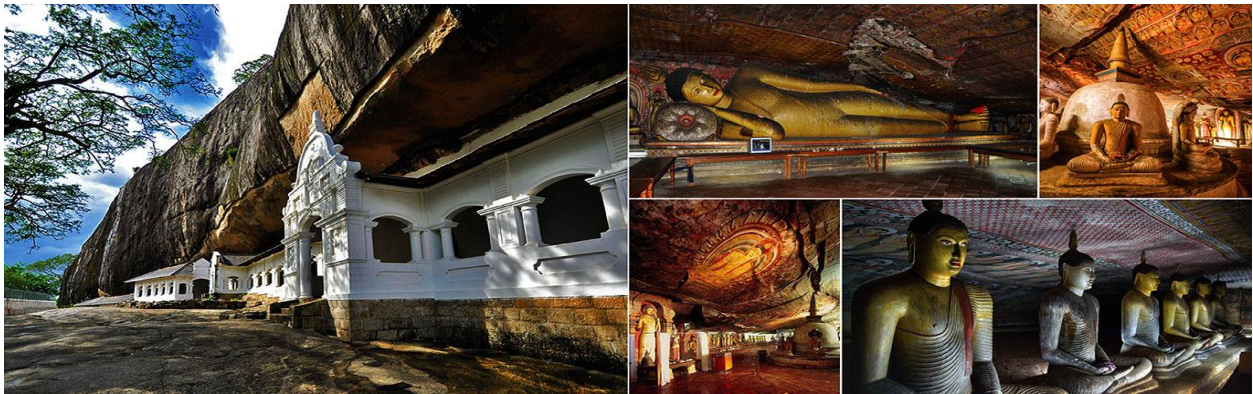
After breakfast leave for Kandy visiting the Dambulla cave temple. Dambulla is the largest and best preserved cave temple complex in Sri Lanka. It's rock ceiling is one large sweep of colorful paintings

which related to Lord Buddha and his life. Some of them are over 2000 years old. There are 80 documented caves in the surrounding and a total of 153 Buddha statues within the cave.

Afterwards leave for Kandy. Visit the Aluvihare Rock Temple en-route. It was a historic location where the Pali Canon was first written down completely in text on ola (palm) leaves.

Reach Kandy and visit the Temple of the Tooth which houses the Sacred Tooth of Lord Buddha. Visitors can observe poojas (offerings) the ancient traditions of drumming and sacred chanting in honor of the Tooth Relic. Witness the Cultural Dancing Show in the evening. It's a stimulating of Sri Lankan Arts, Dance and Cultural Heritage with traditional dancer's & drummer's performance.

Overnight Kandy.



Dambulla Cave Temple



Matale Alu Vihare

Temple of Tooth

DAY 06 KANDY – PINNAWELA - KELANIYA – COLOMBO (170 KM / 05 HOURS DRIVE)

After breakfast leave for Colombo visiting Lankathilake and Gadaladeniya Buddhist temples which are unique examples of the Buddhist construction in brick and stone during the Kandyn period (14th century). Also you may visit Embekke shrine which is an example of the wood carvings of the Kandyn period.

Visit the Pinnawala Elephant Orphanage on the way. It's an orphanage, nursery and captive breeding ground for wild Asian elephants. The orphanage was established to feed, nurse and house young/baby

elephants found abandoned by their mothers. You will be able to feed them according to their time table. Our chauffeur will instruct you about that.

Visit Kelaniya temple in the evening. Buddhists believe the temple to have been hallowed during the third and final visit of the Lord Buddha to Sri Lanka, eight years after gaining enlightenment. Its history would thus go back to before 500 BCE. The Mahawansa records that the original Stupa at Kelaniya enshrined a gem-studded throne on which the Buddha sat and preached. The temple is also famous for its image of the reclining Gautama Buddha and paintings by the native artist Solias Mendis which depict important events in the life of the Buddha, in the history of Buddhism in Sri Lanka. Proceed to Colombo.

Overnight Colombo.



Pinnawala Elephant Orphanage



Kelaniya Buddhist Temple

DAY 07 COLOMBO – CITY TOUR – AIRPORT

After breakfast start the city tour in Colombo visiting Gangaramaya & Seema Malaka Buddhist Temple. Gangaramaya Temple is one of the most important temples in Colombo, Sri Lanka, being a mix of modern architecture and cultural essence. It was completed in the late 19th century. The temple's architecture demonstrates an eclectic mix of Sri Lankan, Thai, Indian, and Chinese architecture.

This Buddhist temple includes several imposing buildings and is situated not far from the placid waters of Beira Lake on a plot of land that was originally a small hermitage on a piece of marshy land. Most notable for tourists is the architecture of the Simamalaka Shrine, which was built with donations from a Muslim sponsor to the design of Geoffrey Bawa.

Other places to be visited / witnessed in Colombo are, Independence Square, Old Parliament Building, Old Dutch Hospital, Temple Trees, President's House, Galle Face Green, Nelum Pokuna Theatre, Lotus Tower, Floating Markets, Pettah Market.

Proceed to Bandatanaike International Airport by highway (35 km / 45 Minutes' Drive).



Gangarama Temple




Seema Malaka Temple

- **Total Cost, Inclusions, Exclusions, Terms & Conditions of the tour package will be notified once we send the final quotation of your tour according to the tour itinerary and your requirements.**
- **Details of the Hotels (05 Star, 04 Star, 03 Star & Budget Hotels) and Cost of Transactions will be notified as per your requirements.**
- **We are flexible to amend / change the above Tour Itinerary and the Total Number of Days of Your Stay in Sri Lanka as per your requirements.**
- **We can provide Air Conditioned Cars, SUVs, Vans & Coaches for you to travel around the country.**
- **We can arrange Professional Chauffeurs, Chauffeur Tourist Guides, National Tourist Guides as per your requirements.**
- **We would like to obtain your inquiries and serve you with utmost care & hospitality with 12 years of experience....**

E- Mail: tours@worldlanka.com

Web: www.worldlanka.com

 Tel: +94 112 877849

 info@worldlanka.com
www.worldlanka.com

 No. 465 A, Sri Jayawardenapura
Mawatha, Rajagiriya, Sri Lanka.



WORLD LANKA TOURS